

NATURE

SUMMER CAMP

REGISTRATION PACKET

2024

Everything you need to prepare for summer camps at the Douglas-Hart Nature Center.



Experience.

Understand.

Appreciate.

ABOUT US

The Douglas-Hart Nature Center was created in 1963 by Helen Douglas-Hart who had a dream of returning farmland to its natural setting prior to human settlement. The Douglas-Hart Nature Center, Friendship Garden, and The Whiteside Garden are maintained by the Douglas-Hart Foundation (DHF). The DHF receives no tax support and is a 501(c)3 non-profit organization with a mission: "Through the responsible stewardship of Helen Douglas-Hart's gifts, the Douglas-Hart Foundation will be a leader in promoting the appreciation, enjoyment, and conservation of our natural resources by providing quality programs for all ages."

OUR SUMMER CAMPS

The Douglas-Hart Nature Center is pleased to offer a safe, fun, and active environment for children over the summer. It is our goal for campers to spend at least 50% of camp time outdoors. We offer a variety of nature-based summer camps for children ages 3-11! While the setting for each camp is the same, the themes are very different. No two summer camps are alike! Please read over the complete registration packet for full details (available online or in the visitor center). Online registration is strongly encouraged. Here are a few helpful tips when planning for summer camps:

REGISTRATION SCHEDULE

- Registration for members opens Monday, March 25, 2024. Become a member for priority registration and discounts! Join by visiting our website (www.dhnature.org/membership) or stop by the nature center.
- Registration opens to the public Monday, April 22, 2024.

ENROLLMENT POLICIES

- Staff caution the number of summer camps a child enrolls in for the summer to avoid burnout. There is no limit to the number of summer camps a child (Grades K-5) may register for. However, if instructors witness tiredness, behavior issues, etc. camps may be reduced for your child/ren's own social-emotional well-being.
 - PreK campers may only register for FOUR week-long half day camps. This gives more individuals the opportunity to attend our camps due to limited spots available.
- Camps require pre-registration. Children will not be admitted into camp without all necessary forms.
- The Douglas-Hart Nature Center reserves the right to cancel under-enrolled camps.
- Camp spots are non-transferable between campers.
- Camp enrollment will follow grade levels completed, not age. There will be 4 primary camp rooms: PreK, Grades K-1, Grades 2-3, Grades 4-5. **Your child MUST have completed the grade to enroll in the specified camp room.** For example, if your child just completed 3rd grade, they would be in the 2-3 grade camps not the 4-5 grade camps.
- If you register your child for a week of camp, they are expected to attend all days. Camp pricing is a weekly rate - we do not offer daily rates (with the exception of One Day camps). Days cannot be pro-rated.
- Please notify staff if your child will miss any days of the week. If there is a no call, no show on the first day of camp, you forfeit your camp registration to someone on the waitlist.
- If your camper is expected to miss more than one day in a week of camp, we recommend signing them up for another week when they can attend all days. This gives others the opportunity to register that can attend the full week. Thank you for your consideration.

ONLINE REGISTRATION

- To register your child into summer camp, visit our website: www.dhnature.org/summercamps
 - While mobile registration is an option, the enrollment process is more compatible with a computer.
- If you have issues registering online or prefer in-person, please stop by the nature center to fill out the registration packet and pay.
- To register online, you will select the '2024 Summer Camp Enrollment' event on our website calendar. This event will prompt you to register the number of children that you will have attend summer camps. Please fill out the Summer Camp Enrollment Form for each child, and then 'check-out'. You will then receive a confirmation email with access to the summer camp registration links.
 - If you already pre-enrolled your children for camps, you do not need to fill this out again. Registration links will automatically be sent to you ahead of time.
- Summer Camp Enrollment Forms only need to be filled out once per child per year, unless their information needs updated. If you don't receive the confirmation email with the links, delete it, etc., please contact the Douglas-Hart Nature Center. We will gladly provide you with the registration links without having to fill out the form again.
- Camps are listed online under grade levels. You will be prompted to enter the child/ren's name for each camp you register them for.

PRICING AND PAYMENTS

- Camp prices increased in 2023, but with this increase, we have added more benefits! Each camper will receive a drawstring backpack in 2024 (one per summer not camp), and snacks will be provided for each camp. For members, before and/or after care is free (see more details on next page).
- Full payment is due at the time of registration.
- Payments may be made using credit card, cash or check. Online registrations are credit card only.
- Registration will not be permitted for any household that has a hold on its account.
- Douglas-Hart Foundation members will receive a discount on their registration. Non-Member (NM) price is listed first, followed by Member (M) price. To become a member, please visit www.dhnature.org/membership, stop by the visitor center, or call the nature center (217-235-4644).

CANCELLATIONS AND REFUNDS

- Refunds are NOT issued if cancellation is made less than seven days prior to camp or if no notification was given. If a child must cancel enrollment in the camp due to serious illness, bereavement, or communicable disease (see 'Illness' for more information), please call the Nature Center as soon as possible and a full refund will be provided upon documentation.

CAMP DROP-OFF/PICK-UP

- All campers must be walked inside by an adult. Do not let your child out at the curb to walk in by themselves.
- Campers may be dropped off fifteen minutes prior to the start of camp.
- **Adults must show their ID at the first drop-off and/or pick-up to receive an 'Approved Adult' card.** This can be used for the duration of the summer during pick-up to expedite the process. If you do not bring your 'Approved Adult' card, you must show your ID and your name must be on the approved pick-up list for the child/ren you are picking up.
- If someone other than the parent/guardian or other contact listed on the Household Form will be picking up your child, or if you need your child at a time other than the designated end time, please inform camp staff.
- If you are running late for drop-off, please call the nature center (217-235-4644) to inform staff. Upon arrival, you will need to walk your child/ren into the nature center and ask staff at the front desk for assistance in locating your child/ren's camp.
- Please be respectful of pick-up times. Fees will be enforced for tardy pick ups. If a parent/guardian is more than 15 minutes late, a fee of \$5 will be charged for every 15 minutes of tardiness. If a child has not been picked up by one hour after the end of the program, proper authorities will be notified. If the designated pick-up time presents a problem, please consider our After Care program. Repeated late pick-ups may result in termination from camps.

BEFORE AND AFTER CARE

- The Douglas-Hart Nature Center will be offering Before Care from **7:45-9:00am** and After Care from **4:00-5:15pm**. You may not drop-off before or pick-up after these times accordingly.
- Before and After Care is supervised, unstructured indoor and/or outdoor play.
- It costs \$25/child per week of Before Care or After Care. If you register your child for Before AND After Care for a week, your total cost would be \$50 for the week in addition to your Summer Camp registration cost. We will not be offering daily rates, except for one-day camp weeks (May 28 - 31, July 1-3, and August 5-9).
- Before and After Care is free for members, but registration is still required.
- To enroll your child in a week of Before and/or After Care, they must also be registered for a corresponding camp that week.
- You **MUST** register for Before and/or After Care at least a week in advance for us to schedule staff/volunteers appropriately.
- To register, go to our website (www.dhnature.org/summercamps) and find the 'Summer Camps Before Care' and 'Summer Camps After Care' events to register you child/ren for care.

ILLNESS

The health and safety of our campers is the top priority of our staff. If a child must miss camp, please notify the Douglas-Hart Nature Center as soon as possible. If a child must cancel enrollment in the camp due to serious illness, bereavement, or communicable disease, please call the Nature Center as soon as possible and a full refund will be provided upon receipt of documentation.

CHILDREN MAY NOT ATTEND CAMP IF:

- They exhibit any of the following: excessive sneezing, coughing, fever of 100.4+, diarrhea, vomiting, head lice, and communicable diseases (pink eye, chicken pox, COVID, strep throat, ringworm/skin rash, etc.).
- In the event your child/ren begins running a fever of 100.4 or greater, they will be sent home immediately and excused from camp until they are 24 hours fever free.

MEDICATION

If your child must bring medication with them, please communicate this on the Household Participant Form and to a staff member. If your child requires medication during the day, a Medical Distribution Form must be filled out on the first day of camp. Medicine should be in the original container and given directly to staff.

FOOD ALLERGIES

The Douglas-Hart Nature Center provides snacks for camps. Please let your child's camp counselor know if your child has any food allergies by listing them on the Household Participant Form.

INDIVIDUAL NEEDS

The health and safety of our campers is top priority for our staff. If your child has individual needs that will impact their experience at camp, or the experience of others in their group, please be forthcoming with information that will ensure a positive and successful experience. If your child has an IEP or 504 at school, please share this information on the Household Form or with a staff member. If your child does not attend public school but has developmental or physical delays or needs, please indicate items on the Household Participant Form. A Direct Support Personnel may be available for children, but this service must be discussed with the Education Director in advance. To set up a meeting, email or call the Education Director.

ARE YOU READY FOR CAMP?

Please watch the summer camp video with your child/ren on our webpage about what to expect at camp, what to bring, what to wear, rules, etc: <https://www.dhnature.org/summercamps.html>. You will also be able to 'meet' our summer camp instructors on this page.

SUGGESTIONS FOR WHAT TO BRING AND WEAR:

- Reusable water bottle
- Bug spray & sunscreen (if your child requires reapplication)
- Lunch – We recommend a nutritious lunch that does not need to be refrigerated or reheated and is brought in a reusable container for youth attending full days.
- Older, but comfortable clothes that may get wet, muddy or dirty. Dress for your children to hike, climb, play, and run. Douglas-Hart Nature Center is not responsible for torn, stained, or damaged clothing. Tennis shoes, closed toe shoes, or strap on sandals (no flip flops) are preferred.
- Boots or rain jackets on rainy days. Even in light rain, groups still go outside.
- If special items are needed, a note will be sent home as a reminder. For example, extra clothes for water play days.
- Camp is about fun and play and getting time away from screens. Please do NOT bring personal possessions such as cell phones, smart watches, electronics, or games. We do not provide lockers and are not responsible for damage, accidents, or theft of valuables.

WHAT TO EXPECT AT CAMP:

- All camps are taught by trained staff. Staff are assisted by youth volunteers referred to as JCI's (Junior Counselor Interns).
- All camps begin with a meet and greet, introduction, and icebreaker each morning. Monday is especially important for campers to attend to establish ground rules, expectations, and overall theme of that camp.
- Douglas-Hart Nature Center camps are educational programs mixed with fun, games, and numerous hands-on opportunities. Camps follow a loose schedule of classroom activities, outdoor exploration, free play, games, crafts, outdoor activities, snack and more.
- It is our goal for campers to spend 50% of their camp time outdoors, unless inclement weather.
- Campers registered for morning and afternoon camps during the same week stay for lunch. Lunch is from 12pm to 1pm. Campers eat from 12-12:30pm followed by free play (usually in the Nature Play Area) from 12:30-1:00pm.
- Fridays are typically water days, so please send your child/ren with extra clothes, shoes, and a towel.

WHAT IS NEW FOR 2024:

- 'Approved Adult' cards for drop-off and pick-up (see the 'Camp Drop-off/Pick-Up' section for more info).
- Snacks are provided, but children are allowed to bring their own snack if they wish. Red dye, nut free, and/or gluten-free options will be available.
- We are offering week long, half day camps for PreK children. Please note that PreK children are limited to registering for FOUR week long camps over the duration of the summer. To be eligible for PreK Camps at the Douglas-Hart Nature Center, individuals must meet the following requirements:
 - Be ages 4 or 5 by the time of the camp. No exceptions. 5 year olds that have attended Kindergarten are eligible for our K-1 camps.
 - Must have bathroom independence.
 - Must be accustomed to no morning nap.
 - Must be able to attend by themselves without an adult.

SCHEDULE

The Douglas-Hart Foundation offers 3 different types of Nature Summer Day Camps: Series, One Day, and Week Long camps. Camp names will be followed by the corresponding symbols to indicate the type of camp:

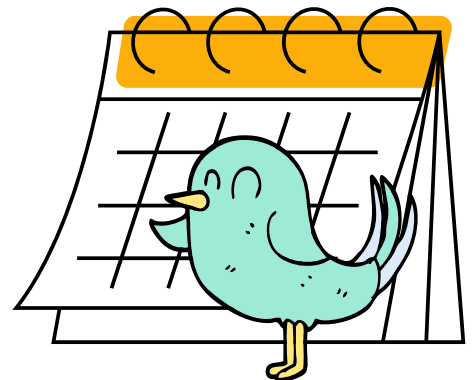
▶▶ Series camps are camps that have multiple dates, but they are not consecutive.

① One day camps are one full day (9am-4pm)

🗓️ Week long **half day** camps are Monday-Friday in the morning (9am-Noon) and afternoon (1-4pm).

Campers (except PreK) can register for morning and afternoon week long camps, and they will remain on site between Noon-1pm for lunch.

Please pay special attention to dates and times.



PREK CAMPS:

SECRET GARDEN ▶▶▶

A: 6/5, 6/12, 6/19, 6/26 • W • 2 – 3p.m. • PreK (ages 3-5) • \$14/NM, \$10/M

B: 7/10, 7/17, 7/24, 7/31 • W • 2 – 3p.m. • PreK (ages 3-5) • \$14/NM, \$10/M

This summer camp is at **The Whiteside Garden** - Charleston's secret garden! Littles will learn and explore through naturalist led activities, games, and more! Adults must stay on-site for the program. A & B are the same camp offered at two different sets of dates. Price includes all 4 dates for each series.

HAPPY CAMPER 🧩

6/3-6/7 • M-F • 9am-12pm • PreK (Ages 4 & 5) • \$70/NM, \$60/M

If you're happy and you know it, clap your hands! Great for first time campers to explore, learn, and play with friends all week long!

HEY CHICKEN LITTLE 🧩

6/10-6/14 • M-F • 9am-12pm • PreK (Ages 4 & 5) • \$70/NM, \$60/M

Hey Chicken Littles, are you ready to learn about birds this week?

THE GOOD, THE BAD, THE BUGLY 🧩

6/17-6/21 • M-F • 9am-12pm • PreK (Ages 4 & 5) • \$70/NM, \$60/M

This camp has it all - the good, the bad, and the BUGly!

A IS FOR AMPHIBIANS *NEW* 🧩

6/24-6/28 • M-F • 9am-12pm • PreK (Ages 4 & 5) • \$70/NM, \$60/M

A... B... 'C' you at camp to learn about the wonderful world of amphibians!

EXPLORE S'MORE 🧩

7/8-7/12 • M-F • 9am-12pm • PreK (Ages 4 & 5) • \$70/NM, \$60/M

This camp is perfect for first year campers as we explore, play, craft and more!

SLOW AND STEADY *NEW* 🧩

7/15-7/19 • M-F • 9am-12pm • PreK (Ages 4 & 5) • \$70/NM, \$60/M

We will learn from the turtle and the hare that slow and steady wins the race!

BUDDING BOTANISTS 🧩

7/22-7/26 • M-F • 9am-12pm • PreK (Ages 4 & 5) • \$70/NM, \$60/M

Become a budding botanist as you learn and play with flowers, plants, and trees!

BLUEGILL AND BUBBLES *NEW* 🧩

7/29-8/2 • M-F • 9am-12pm • PreK (Ages 4 & 5) • \$70/NM, \$60/M

Something about this camp seems a little fishy... what is making those bubbles in the pond?

GRADES K-1 CAMPS:

MUDDY AND MESSY ①

5/28 • T • 9am-4pm • Grades K-1 • \$28/NM, \$22/M

Campers - come ready to get muddy and messy! There's no such thing as clean fun in this camp!

THE GIVING TREE ①

5/29 • W • 9am-4pm • Grades K-1 • \$28/NM, \$22/M

Come make our trees happy by learning what they can do for you! From play to paper, this terrific tree camp will show you how giving trees really are!

DUCK DUCK GOOSE ①

5/30 • Th • 9am-4pm • Grades K-1 • \$28/NM, \$22/M

Let's take a paddle around the pond! This flock of campers will splash and explore wild geese.

SCIENTWIST ①

5/31 • F • 9am-4pm • Grades K-1 • \$28/NM, \$22/M

Science is full of twists and turns. Can you unwind the truth behind science experiments like Ada Twist?

BACKPACKS AND BOOTS 🧩

6/3-6/7 • M-F • 9am-12pm • Grades K-1 • \$70/NM, \$60/M

Let's go! In this Dora the Explorer style camp, campers will explore and solve mysteries with backpacks, boots, and maybe even a map!

EVERYTHING IS AWESOME 🧩

6/3-6/7 • M-F • 1-4pm • Grades K-1 • \$70/NM, \$60/M

Everything is awesome during this STEAM camp. Campers will build solutions to various problems using materials like wooden blocks, sticks, and of course, legos!

WHOOO GOES THERE 🧩

6/10-6/14 • M-F • 9am-12pm • Grades K-1 • \$70/NM, \$60/M

Who goes there!? Find out during this camp all about owls and our other feathered friends!

ONCE UPON A TIME 🧩

6/10-6/14 • M-F • 1-4pm • Grades K-1 • \$70/NM, \$60/M

Become an early explorer and use your imagination to learn what life was like once upon a time for Indigenous Americans!

GRADES K-1 CAMPS (CONTINUED):

CAMP CARLE 🗓️

6/17-6/21 • M-F • 9am-12pm • Grades K-1 • \$70/NM, \$60/M

The world of Eric Carle and his very hungry caterpillar, quiet cricket, busy spider, and more await! Are you very excited?!

TWINKLE TWINKLE LITTLE STARS 🗓️

6/17-6/21 • M-F • 1-4pm • Grades K-1 • \$70/NM, \$60/M

Twinkle, twinkle little star, come to this camp to find out what they are! Explore the sun, stars, constellations, and more at this night themed camp!

TOTALLY TURTLE 🗓️

6/24-6/28 • M-F • 9am-12pm • Grades K-1 • \$70/NM, \$60/M

Cowabunga dude! Let's have some totally turtle adventures this week!

ARE YOU FUR-REAL? 🗓️

6/24-6/28 • M-F • 1-4pm • Grades K-1 • \$70/NM, \$60/M

Yes, we are fur-real! Campers will learn how to ID mammals based on their scat, tracks, and of course, fur!

LUNAR LITTLES ①

7/1 • M • 9am-4pm • Grades K-1 • \$28/NM, \$22/M

When the moon is out, who is up and about? Lunar Littles will explore the lives of nocturnal animals!

ADVENTURES IN WONDERLAND *NEW* ①

7/2 • T • 9am-4pm • Grades K-1 • \$28/NM, \$22/M

Let's go down the rabbit hole in this camp to explore the secrets of the forest and the animals within!

CAMP GROW ①

7/3 • W • 9am-4pm • Grades K-1 • \$28/NM, \$22/M

Budding botanists will explore and grow their knowledge of trees and plants through gardening games, crafts, and more!

STORYTIME SAFARI 🗓️

7/8-7/12 • M-F • 9am-12pm • Grades K-1 • \$70/NM, \$60/M

Imagination takes you everywhere and so will this camp! Go on an adventure each day as you read new stories that lead you to explore, create, sing, dance, and play!

ANIMAL OLYMPICS 🗓️

7/8-7/12 • M-F • 1-4pm • Grades K-1 • \$70/NM, \$60/M

Jump, run, leap, and climb like animals! How do you compare to the animal olympians?!

DIVE IN 🗓️

7/15-7/19 • M-F • 9am-12pm • Grades K-1 • \$70/NM, \$60/M

Dive into this camp to explore marine animals, coral reefs, and more!

DINO TALES 🗓️

7/15-7/19 • M-F • 1-4pm • Grades K-1 • \$70/NM, \$60/M

Unearth fossils, rocks, and the tales of dinosaurs that once roamed the Earth!

EVERYBODY'S ZOOING IT 🗓️

7/22-7/26 • M-F • 9am-12pm • Grades K-1 • \$70/NM, \$60/M

Become a junior zookeeper by learning about lions, tigers, and bears - oh my!

HUNGRY HUNGRY CRITTERS 🗓️

7/22-7/26 • M-F • 1-4pm • Grades K-1 • \$70/NM, \$60/M

What's munching munching and won't stop crunching? Explore the lives of hungry hungry critters!

MUD PIES AND BLUE SKIES *NEW* 🗓️

7/29-8/2 • M-F • 9am-12pm • Grades K-1 • \$70/NM, \$60/M

What's better than summer days enjoying mud pies and blue skies?! Campers should bring extra clothes, shoes, and a towel.

FAIRY TALES 🗓️

7/29-8/2 • M-F • 1-4pm • Grades K-1 • \$70/NM, \$60/M

From scaly dragons and flying unicorns, this camp is a fairy tale for boys and girls alike. Campers will build and play in the fairy garden to make it come to life!

CAMP CIRCUS *NEW* ①

8/5 • M • 9am-4pm • Grades K-1 • \$28/NM, \$22/M

This camp is a circus, and we need some ringleaders to help us return the circus animals back to their native habitats!

HIPPITY HOP ①

8/6 • T • 9am-4pm • Grades K-1 • \$28/NM, \$22/M

I said hip hop, hippity hop, do the bunny hop while we explore the world of rabbits!

GRADES K-1 CAMPS (CONTINUED):

FOUR SEASONS ①

8/7 • W • 9am-4pm • Grades K-1 • \$28/NM, \$22/M

Welcome to the four seasons - enjoy fall, winter, spring and summer all in one day. Leaf identification, snow play, flower planting, and more!

CREATIVE CREATIONS ①

8/8 • Th • 9am-4pm • Grades K-1 • \$28/NM, \$22/M

The possibilities are endless when nature is the inspiration for this craft camp! Use pinecones, sticks, and more to make your own creations. Don't worry - outdoor exploration and games are a must in this camp too!

ONE MORE DAY OF SUMMER ①

8/9 • F • 9am-4pm • Grades K-1 • \$28/NM, \$22/M

It's the campers' choice! Campers will decide the games, crafts, and activities for ONE MORE DAY OF SUMMER fun before school starts back up!

GRADES 2-3 CAMPS:

TWILIGHT ▶▶▶

5/29, 7/3, 8/7 • W • 5:30-8:30p.m. • Grades 2-3 • \$40/NM, \$34/M

Enjoy this chance to stay out late with the bats, owls, and stars! From flashlight tag to campfires, this camp will be a twilight delight! Please note a hotdog campfire dinner will be provided on the last camp date. Campers are welcome to bring their own dinner if desired. Price includes all 3 dates.

SLIMY AND SCALY ①

5/28 • T • 9am-4pm • Grades 2-3 • \$28/NM, \$22/M

We are on the hunt for all creatures slimy and scaly during this exploration camp!

FOREST FRIENDS *NEW* ①

5/29 • W • 9am-4pm • Grades 2-3 • \$28/NM, \$22/M

Bees and flowers, fungi and trees, birds and deer are all forest friends! Explore unlikely friendships between living creatures and maybe make a few new friends of your own!

SPIDEY SENSE ①

5/30 • Th • 9am-4pm • Grades 2-3 • \$28/NM, \$22/M

A camp devoted to our eight-legged friends! Are your spidey senses tingling?

FIZZY GOOPY SCIENCE ①

5/31 • F • 9am-4pm • Grades 2-3 • \$28/NM, \$22/M

Mad science experiments await - what fizzy, goopy things will we cook up in our lab?

THE GOONIES 🎮

6/3-6/7 • M-F • 9am-12pm • Grades 2-3 • \$70/NM, \$60/M

Hey you guys! This adventure camp is filled with pirates and treasures, friends and foes, exploration and mystery, and more!

STICKS-N-STONES 🎮

6/3-6/7 • M-F • 1-4pm • Grades 2-3 • \$70/NM, \$60/M

Create forts, bridges, and FUN with the building blocks of nature - sticks and stones!

WINGIN IT 🎮

6/10-6/14 • M-F • 9am-12pm • Grades 2-3 • \$70/NM, \$60/M

Campers will wing it during this camp to explore the wonders of birds from feathers to flight!

ICE AGE 🎮

6/10-6/14 • M-F • 1-4pm • Grades 2-3 • \$70/NM, \$60/M

The heat of the summer can't stop us from exploring glaciers, megafauna, and more about the Ice Age!

WHAT'S THE BUZZ 🎮

6/17-6/21 • M-F • 9am-12pm • Grades 2-3 • \$70/NM, \$60/M

Protect the bees - collect the reward: sweet honey! Campers will experience beekeeping at their own comfort level, with chances to observe a real beehive in full-body-coverage youth beekeeper suits.

TO INFINITY AND BEYOND 🎮

6/17-6/21 • M-F • 1-4pm • Grades 2-3 • \$70/NM, \$60/M

It's time to reach for the stars during this astronomy camp... to infinity and beyond!

LEAP FROG 🎮

6/24-6/28 • M-F • 9am-12pm • Grades 2-3 • \$70/NM, \$60/M

Leap into this camp to explore tadpoles, frogs, toads, salamanders, and more!

WHO DUNIT 🎮

6/24-6/28 • M-F • 1-4pm • Grades 2-3 • \$70/NM, \$60/M

Nature's mysteries await! Are you ready to study 'fur-ensics' to find out whodunit?

GRADES 2-3 CAMPS (CONTINUED):

EWV GROSS ①

7/1 • M • 9am-4pm • Grades 2-3 • \$28/NM, \$22/M

From slugs to scat, this camp will have you saying 'Eww Gross!'

CAMP RUNAMUCK ①

7/2 • T • 9am-4pm • Grades 2-3 • \$28/NM, \$22/M

Campers will runamuck in this fly by the seat of your pants style camp as they play and explore outdoors!

DIG IN THE DIRT ①

7/3 • W • 9am-4pm • Grades 2-3 • \$28/NM, \$22/M

Are you ready to find the dirt on dirt? Dig in to learn about soil, rocks, and the creatures living within!

ROCKIN' AROUND THE RAINFOREST 🏠

7/8-7/12 • M-F • 9am-12pm • Grades 2-3 • \$70/NM, \$60/M

Welcome to the jungle! Rock and roll through the rainforest to learn about the animals living within.

SUPERHEROES 🏠

7/8-7/12 • M-F • 1-4pm • Grades 2-3 • \$70/NM, \$60/M

From Ant-man to Spider-Man, these superheroes channel their inner animals, and you will too!

WHAT DO YOU SEA? 🏠

7/15-7/19 • M-F • 9am-12pm • Grades 2-3 • \$70/NM, \$60/M

Go under the sea in this week's camp to explore oceans and marine animals. Who knows what you will 'sea'?!

CAMP CRETACEOUS 🏠

7/15-7/19 • M-F • 1-4pm • Grades 2-3 • \$70/NM, \$60/M

Dinosaurs have escaped and we are asking campers to help identify species, study their behaviors, and find their correct habitat! Are you up for this cretaceous challenge?

ANIMAL APPRENTICE 🏠

7/22-7/26 • M-F • 9am-12pm • Grades 2-3 • \$70/NM, \$60/M

Become an animal apprentice after learning the ins and outs of proper animal care!

AMONG US *NEW* 🏠

7/22-7/26 • M-F • 1-4pm • Grades 2-3 • \$70/NM, \$60/M

There are predators among us! Learn about the tactics of predators and prey to survive this camp!

WILD WATER 🏠

7/29-8/2 • M-F • 9am-12pm • Grades 2-3 • \$70/NM, \$60/M

'Water' you waiting for?! Let's learn about wild water and the animals living within! Campers should bring extra clothes, shoes, and a towel.

CAMP BIGFOOT 🏠

7/29-8/2 • M-F • 1-4pm • Grades 2-3 • \$70/NM, \$60/M

Calling all campers! We need your tracking skills to find the creature that lurks in the woods . . .

NEW HORIZONS ①

8/5 • M • 9am-4pm • Grades 2-3 • \$28/NM, \$22/M

Escape into the wild to build your own shelter, gather your own food, and enjoy your new horizons in this Animal Crossing themed camp.

OPOSSUM-BILITIES ①

8/6 • T • 9am-4pm • Grades 2-3 • \$28/NM, \$22/M

The possibilities are endless during this marsupial inspired camp!

NATURE'S FURY ①

8/7 • W • 9am-4pm • Grades 2-3 • \$28/NM, \$22/M

Earthquakes, tornadoes, volcanoes - let's explore nature's destructive side!

WILD BY DESIGN *NEW* ①

8/8 • Th • 9am-4pm • Grades 2-3 • \$28/NM, \$22/M

From the bumpy texture of bark to the unique stripes of zebras, nature is wild by design! We will use it as our inspiration to explore and create during camp!

ONE MORE DAY OF SUMMER ①

8/9 • F • 9am-4pm • Grades 2-3 • \$28/NM, \$22/M

It's the campers' choice! Campers will decide the games, crafts, and activities for ONE MORE DAY OF SUMMER fun before school starts back up!

GRADES 4-5 CAMPS:

TWILIGHT ▶▶▶

5/29, 7/3, 8/7 • W • 5:30-8:30p.m. • Grades 4-5 • \$40/NM, \$34/M

Enjoy this chance to stay out late with the bats, owls, and stars! From flashlight tag to campfires, this camp will be a twilight delight! Please note a hotdog campfire dinner will be provided on the last camp date. Campers are welcome to bring their own dinner if desired. Price includes all 3 dates.

GRADES 4-5 CAMPS (CONTINUED):

CATCH AND RELEASE ①

5/28 • T • 9am-4pm • Grades 4-5 • \$28/NM, \$22/M
Hands, nets and buckets – what will you catch today?

MOCKINGJAY MATCHES *NEW* ①

5/29 • W • 9am-4pm • Grades 4-5 • \$28/NM, \$22/M
May the odds be ever in your favor during this Hunger Games themed camp. Campers will team up to learn and complete wilderness survival challenges.

HOGWARTS HOUSES ①

5/30 • Th • 9am-4pm • Grades 4-5 • \$28/NM, \$22/M
Dive into the wizarding world of Harry Potter, and the animals that represent each Hogwarts House – lion, snake, eagle, and badger.

MYTHBUSTERS ①

5/31 • F • 9am-4pm • Grades 4-5 • \$28/NM, \$22/M
Can you get warts from a toad or tell the temperature by cricket chirps? We'll put science myths to the test in this camp!

WILDERNESS WISE

6/3-6/7 • M-F • 9am-12pm • Grades 4-5 • \$70/NM, \$60/M
Fires, edible plants and navigation – learn to survive the elements of nature!

ECO-ENGINEERS

6/3-6/7 • M-F • 1-4pm • Grades 4-5 • \$70/NM, \$60/M
Full STEAM ahead - build boats, airplanes, buildings, and more - all inspired by nature!

AERODYNAMIC ADVENTURES *NEW*

6/10-6/14 • M-F • 9am-12pm • Grades 4-5 • \$70/NM, \$60/M
Airplanes, rockets, kites, and of course, birds will be the focus of this flight inspired camp!

THE OREGON TRAIL

6/10-6/14 • M-F • 1-4pm • Grades 4-5 • \$70/NM, \$60/M
Let's pack up the wagon and head west to explore pioneer life on this real life trail adventure game!

POLLINATOR PARTY

6/17-6/21 • M-F • 9am-12pm • Grades 4-5 • \$70/NM, \$60/M
It's National Pollinator Week, so we are going to celebrate! From bees to hummingbirds, this pollinator party will be buzzing with activities, games, and excitement!

MISSION TO MARS

6/17-6/21 • M-F • 1-4pm • Grades 4-5 • \$70/NM, \$60/M
We are on a mission to mars! Let's learn about the Red Planet's composition, climate, and more before we blast off into space!

HOORAY FOR HERPS

6/24-6/28 • M-F • 9am-12pm • Grades 4-5 • \$70/NM, \$60/M
Dive into the slimy and scaly world of amphibians and reptiles called herpetology!

NATURE'S GADGETS

6/24-6/28 • M-F • 1-4pm • Grades 4-5 • \$70/NM, \$60/M
Wowzers! Work together to inspect and solve mysteries . . . can you create nature gadgets to help you along the way?

WILD WONKA *NEW* ①

7/1 • M • 9am-4pm • Grades 4-5 • \$28/NM, \$22/M
You've got a golden ticket to the nature center! "Everything [outside] is eatable. I mean edible. I mean you can eat everything." Join us for a day of identifying edible plants and using them to make scrumdiddlyumptious treats.

CLUE INTO NATURE ①

7/2 • T • 9am-4pm • Grades 4-5 • \$28/NM, \$22/M
Unravel the mysteries of the forest using your detective skills in this scavenger hunt based camp.

ELEMENT EXPERIMENTS *NEW* ①

7/3 • W • 9am-4pm • Grades 4-5 • \$28/NM, \$22/M
The four elements - earth, water, air, and fire - bring this camp to life with fun and messy games, crafts, and experiments.

TREASURE QUEST

7/8-7/12 • M-F • 9am-12pm • Grades 4-5 • \$70/NM, \$60/M
Ahoy Matey! Arrrrrh you ready to go on pirate quests like geocaching and letterboxing to uncover the treasures of Douglas-Hart?

TRIBAL CAMP

7/8-7/12 • M-F • 1-4pm • Grades 4-5 • \$70/NM, \$60/M
Team and individual competitions rule this camp! Campers will become part of a tribe and learn the importance of good sportsmanship through capture the flag, game shows, and more!

GRADES 4-5 CAMPS (CONTINUED):

BOAT MASTERS 🚤

7/15-7/19 • M-F • 9am-12pm • Grades 4-5 • \$70/NM, \$60/M

Set sail! We'll build boats, race boats, and paddle real canoes on the water! (Life jacket required. Limited supply available).

CAMP ROCK 🪨

7/15-7/19 • M-F • 1-4pm • Grades 4-5 • \$70/NM, \$60/M

Calling all rock buffs! We will work on a rock collection, crush geodes, and erupt a volcano!

INSIDE OUT 🐛

7/22-7/26 • M-F • 9am-12pm • Grades 4-5 • \$70/NM, \$60/M

This dissection camp will let future scientists learn more about animals by letting them explore the internal anatomy of grasshoppers, worms, and crayfish!

AT RISK *NEW* 🐾

7/22-7/26 • M-F • 1-4pm • Grades 4-5 • \$70/NM, \$60/M

Uh oh! There are some animals at risk of extinction! Let's learn about them and what we can do to help!

FISHING FUN 🐟

7/29-8/2 • M-F • 9am-12pm • Grades 4-5 • \$70/NM, \$60/M

Fun doesn't begin to describe this camp! Identify local fish, make your own stink bait, and of course, go fishing!

CAMP HALF-BLOOD *NEW* 🏛️

7/29-8/2 • M-F • 1-4pm • Grades 4-5 • \$70/NM, \$60/M

Calling all demigods! Join the world of Percy Jackson & the Olympians to learn the stories of Greek mythology, train like a hero, and complete quests for glory.

CYCLE MASTERS 🚲

8/5 • M • 9am-4pm • Grades 4-5 • \$28/NM, \$22/M

Bring your bicycle (in good working condition) for a two-wheeled journey on the Lincoln Prairie Trail. Races, games, and bike skills included!

RUFFIN IT 🐕

8/6 • T • 9am-4pm • Grades 4-5 • \$28/NM, \$22/M

It's 'ruff' being a dog owner. Join us for this doggy day camp that will help you understand your furry friends a little better. Optional: camper's adults can come 30 minutes early to pick-up with well-behaved dogs for Show-n-Tell.

LITTLE SHOP OF HORRORS 🕷️

8/7 • W • 9am-4pm • Grades 4-5 • \$28/NM, \$22/M

They are green, mean, meat-eating machines - they are carnivorous plants! Explore our bog garden and take home your own carnivorous plant!

ART-RAGEOUS JOURNALING 🎨

8/8 • Th • 9am-4pm • Grades 4-5 • \$28/NM, \$22/M

Sketching, journaling, and photography - let's capture nature at its finest!

ONE MORE DAY OF SUMMER 🌞

8/9 • F • 9am-4pm • Grades 4-5 • \$28/NM, \$22/M

It's the campers' choice! Campers will decide the games, crafts, and activities for ONE MORE DAY OF SUMMER fun before school starts back up!

JOIN US THIS SUMMER!

Douglas-Hart Nature Center

2204 Dewitt Ave E

Phone: 217-235-4644

E-Mail: programs@dhnature.org

Website: www.dhnature.org

Nature Center Hours:

Mon. - Fri. 8 a.m. to 4 p.m.

Sat. 10 a.m. to 4 p.m.

Sun. 1 p.m. to 4 p.m.

Trails are open daily dawn to dusk

For tax purposes our FEIN # is:

37-0840618

Don't forget to visit our other properties:
Friendship Garden and The Whiteside Garden

